



Life's better outside.®

Commissioners

Jeffery D. Hildebrand
Chairman
Houston

Oliver J. Bell
Vice-Chairman
Cleveland

James E. Abell
Kilgore

Wm. Leslie Doggett
Houston

Paul L. Foster
El Paso

Anna B. Galo
Laredo

Robert L. "Bobby" Patton, Jr.
Fort Worth

Travis B. "Blake" Rowling
Dallas

Dick Scott
Wimberley

Lee M. Bass
Chairman-Emeritus
Fort Worth

T. Dan Friedkin
Chairman-Emeritus
Houston

David Yoskowitz, Ph.D.
Executive Director

08/01/2024

Dear Mother Neff State Park Neighbor:

The Texas Parks and Wildlife Department is planning to conduct prescribed burns in Mother State Park at 1921 Park Road 14 sometime between September 2024 and April 2025.

Our primary target timeframe for these burns is sometime between September 2024 and December 2024. Burn opportunities are dependent on weather, vegetation conditions, current and expected fire danger, and many other considerations. If we are unable to conduct these burns within this target timeframe, we will contact you again with the next potential timeframe.

During the burn, you may see smoke in your neighborhood or on nearby roads. We caution you to reduce your speed and use your low-beam headlights when smoke is present. Other recommended precautions prior to the burn include relocating hay, woodpiles, pets, horses, other livestock, and equipment away from park boundary fences and providing defensible space around structures adjacent to park property.

Prescribed burns are a management tool used to restore forest and prairie habitats that were periodically burned by natural fires. Prescribed burns also reduce the potential damage a wildfire could cause by reducing available fuels such as dead trees, leaf litter, and other flammable vegetation on the landscape. Prescribed fires on state parks are conducted by Texas Parks and Wildlife Department personnel who have undergone extensive fire training and meet national wildland firefighting and incident management standards. Additionally, the state park staff will work with local fire and emergency management officials to plan and conduct the prescribed fire.

Each prescribed fire plan defines the local weather and other conditions under which a prescribed burn may be conducted, the personnel and equipment required, and fire-break locations. Most importantly, the fire plan prioritizes public and firefighter safety. The plan reduces the risk of fire escaping onto adjacent properties and minimizes the effect of smoke in nearby residential and smoke sensitive areas. The plan also establishes contingency measures to protect adjacent properties if the fire were to escape established boundaries. The prescribed burns are ignited by hand in predetermined patterns that ensure the best measures for containment.

Texas has a history of naturally occurring wildfires, making prescribed burns very important to maintaining habitats on State Parks. Private landowners should consider implementing wildfire mitigation efforts on their lands as well in order to preserve their property and way of life before a wildfire event starts. Information on how to be prepared can be found at: www.nfpa.org/education-and-research/wildfire/firewise-usa.

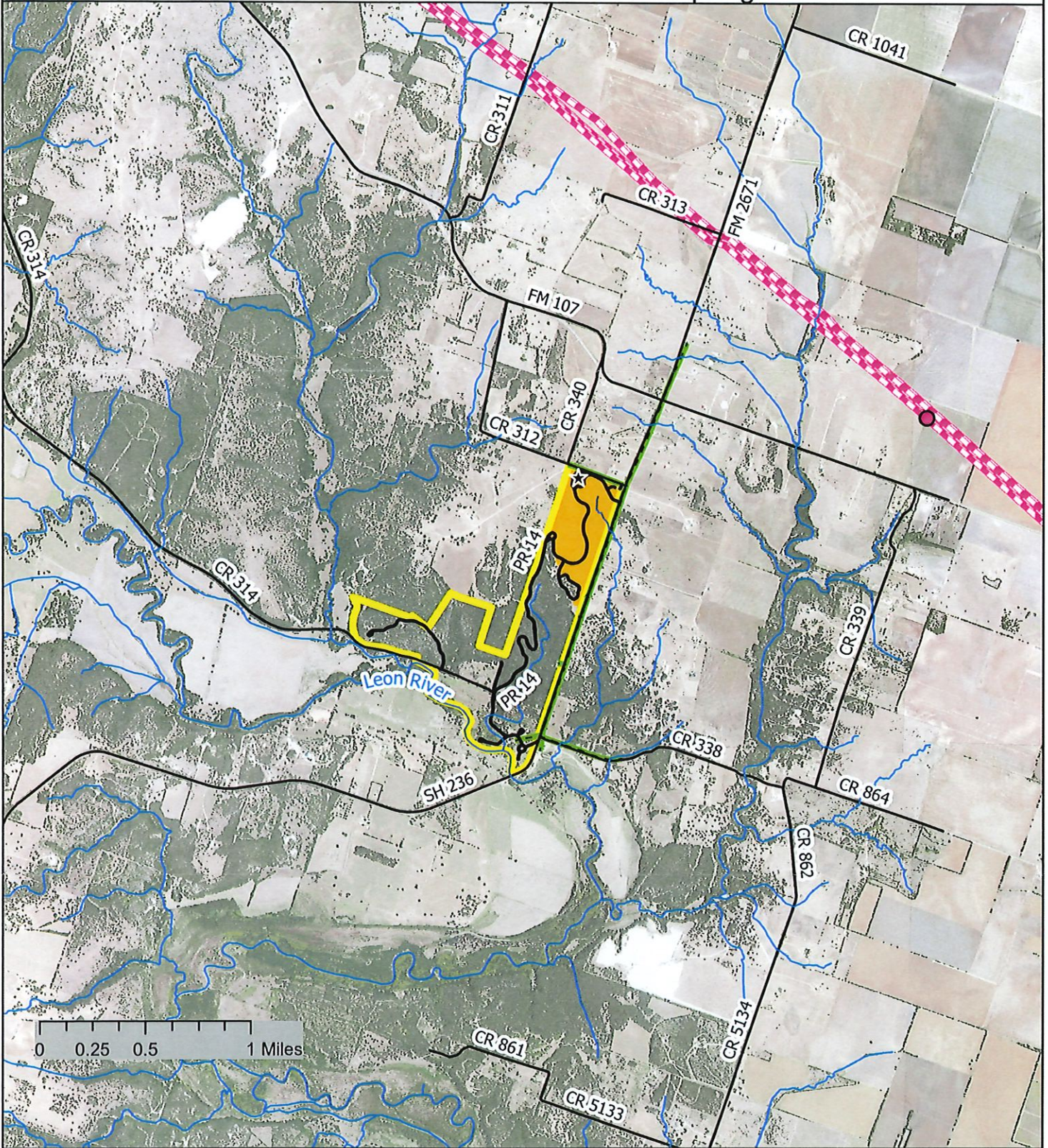
Please contact Melissa Chadwick at (254)853-2389 or email at Melissa.Chadwick@tpwd.texas.gov if you have any questions regarding the planned burn or notifications. Thank you for your support and understanding of this valuable and necessary habitat management and fuel reduction tool.

Sincerely,

Melissa Chadwick
Park Superintendent
Mother Neff State Park
1921 Park Road 14
Moody, TX 76557
(254) 853-2389

Attachment: Prescribed Fire Treatment Area Map

Mother Neff State Park, Coryell County: Prescribed Fire Notice - Fall 2024 - Spring 2025



- ★ Park Headquarters
- Oil/Gas Wells
- Oil/Gas Pipelines
- Roads
- Overhead Electric Lines
- Mother Neff State Park
- Planned Prescribed Fire Area



Map ID: Mother Neff State Park_
RX-Public Notice - FY2025
Imagery NAIP 2022 - UTM z15 NAD83
Maps are for planning purposes only.
No claims to accuracy are made or implied.
Pipeline and well data from
the Texas Railroad Commission.

